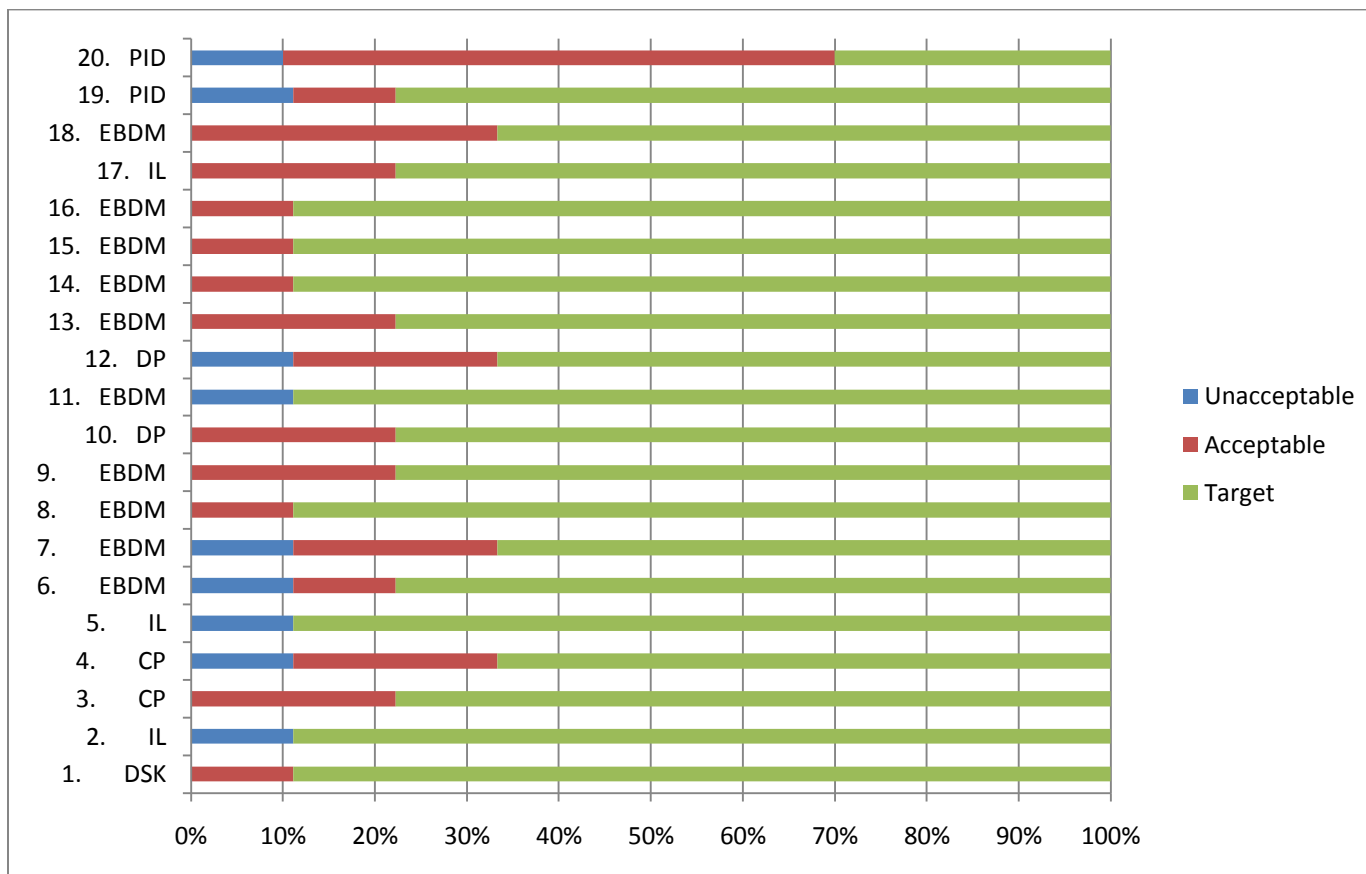


**ADVANCED CANDIDATE PERFORMANCE ON PROFESSIONAL IMPACT PROJECT, FALL 2010 (n=9)
ALIGNMENT WITH ADVANCED COMPETENCIES**



Key to Advanced Competencies:

- EBDM=Evidence-Based Decision Making
- IL=Information Literacy
- CP=Contextual Perspective
- DP=Diversity of Practice
- DSK=Domain Specific Knowledge
- PID=Professional Identity Development

PROFESSIONAL IMPACT PROJECT INDICATORS

1. DEFINE AREA TARGETED FOR GROWTH -- What has caused the candidate to focus on this particular area targeted for growth?
2. DEFINE AREA TARGETED FOR GROWTH -- What professional literature informs the area targeted for growth?
3. DEFINE AREA TARGETED FOR GROWTH -- What data sources support that this is an area targeted for growth in the proposed setting?
4. DEFINE AREA TARGETED FOR GROWTH -- Does the candidate consider input from constituent(s) when defining the area targeted for growth?
5. DEFINE AREA TARGETED FOR GROWTH -- Based on the professional literature, the proposed setting, and constituent input, what does the candidate hope to learn as a result of doing this Professional Impact Project?
6. PLAN OF ACTION -- What is the action plan?
7. PLAN OF ACTION -- What factors were used to select or design the action?
8. PLAN OF ACTION -- Does the action plan demonstrate understanding of the area targeted for growth?
9. PLAN OF ACTION -- Does the action plan include valid and reliable measures to assess the impact of the action?
10. PLAN OF ACTION -- Does the proposed action demonstrate consideration of constituent(s)' needs/viewpoints?
11. IMPLEMENTATION -- What is the nature of the alignment/fidelity of actions with the action plan?
12. IMPLEMENTATION -- Is the action plan implemented with respect to constituent(s)' needs/viewpoints?
13. IMPLEMENTATION -- Are adequate data collected and presented in a systematic way?
14. IMPLEMENTATION -- Is data analysis appropriate to address the questions asked or area targeted for growth investigated?
15. IMPLEMENTATION -- Is data analysis thorough and accurate?
16. EVALUATE IMPACT -- Do the candidate's actions contribute to improving the area targeted for growth in a significant way?
17. EVALUATE IMPACT -- What is the relationship between the findings and the research literature/
18. EVALUATE IMPACT -- What were the unintended outcomes of the action?
19. REFLECTION -- How has the impact project contributed to your professional knowledge, skills and dispositions?
20. REFLECTION -- What are your professional goals for furthering your professional growth?